

24 Irish, English and Scottish Dances, vol. 2

Transcribed for viola da gamba
(Includes treble, tenor and bass scores)

Dick Yates
April 2024

Contents

	Treble	Tenor	Bass
Ask My Father.....	1	15	29
Get Up Early.....	1	15	29
Dan Roger's Jig.....	2	16	30
Tie the Petticoat Tighter.....	2	16	30
Trip It Upstairs	3	17	31
Moll In the The Wad	3	17	31
Tim The Thatcher.....	4	18	32
Is It The Priest You Want.....	4	18	32
Whisky And Water.....	5	19	33
The Broken Pledge.....	5	19	33
Repeal Of The Union	6	20	34
The Milliner's Daughter.....	6	20	34
Music In the Glen.....	7	21	35
Take Your Choice	7	21	35
The Avonmore.....	8	22	36
The Merry Days Of Easter	8	22	36
Leave My Way	9	23	37
The Bunch Of Green Rushes.....	9	23	37
Miss McDonald.....	10	24	38
The Bloom Of Youth	11	25	39
The Cloone Hornpipe.....	11	25	39
The Liverpool Hornpipe.....	12	26	40
Bantry Bay.....	13	27	41
The Kilkenny Hornpipe.....	13	27	41

Irish, English and Scottish Dances, vol 2

Ask My Father

Musical notation for the piece "Ask My Father". It is written in G major (one sharp) and 6/8 time. The piece consists of four staves of music. The first staff begins with a treble clef, a key signature of one sharp (F#), and a 6/8 time signature. The melody is composed of eighth and sixteenth notes, with some beamed eighth notes. The second and fourth staves end with a double bar line and repeat dots. The third staff begins with a repeat sign.

Get Up Early

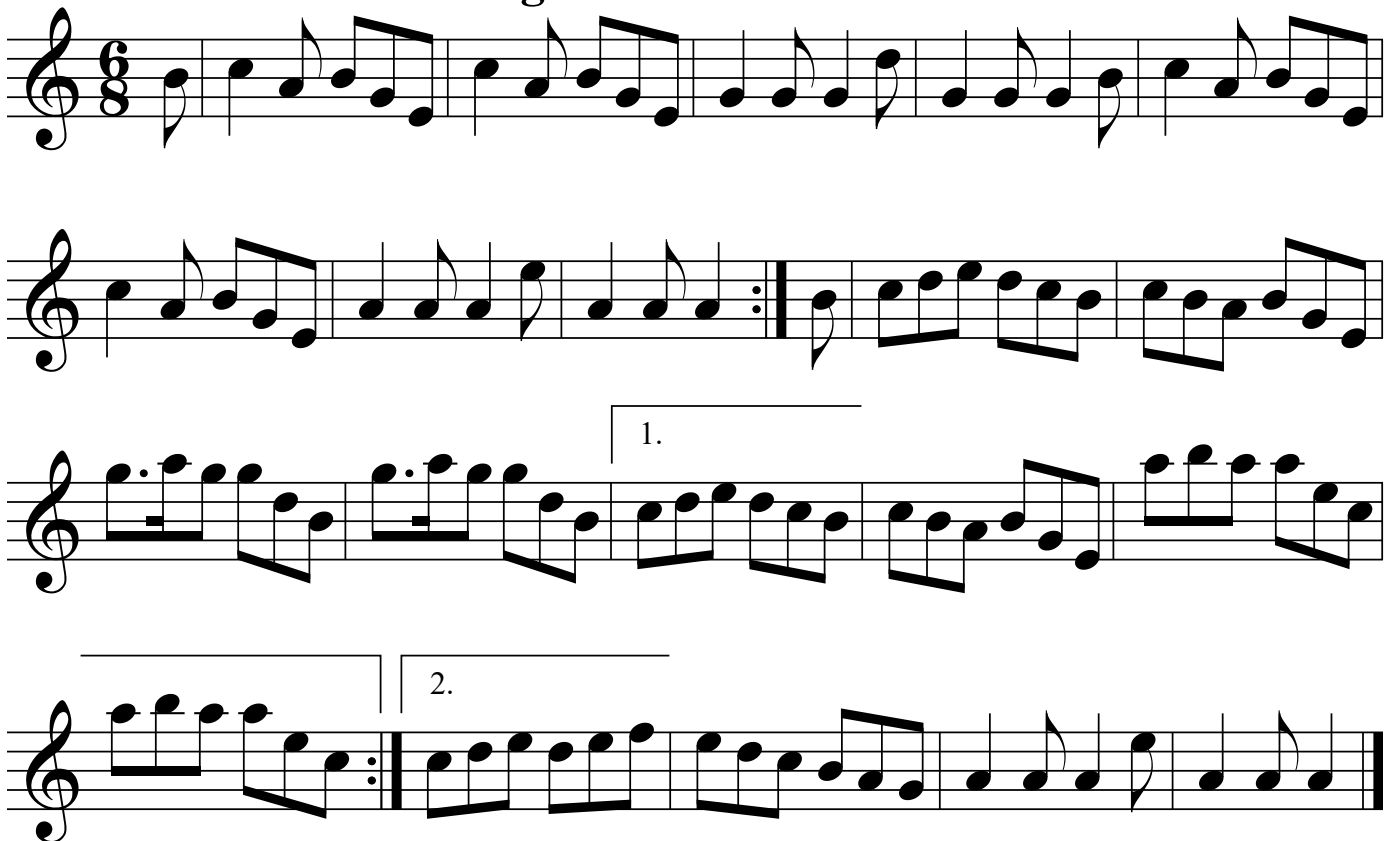
Musical notation for the piece "Get Up Early". It is written in G minor (two flats) and 6/8 time. The piece consists of five staves of music. The first staff begins with a treble clef, a key signature of two flats (Bb, Eb), and a 6/8 time signature. The melody is composed of eighth and sixteenth notes, with some beamed eighth notes. The second and fifth staves end with a double bar line and repeat dots. The third and fourth staves are first and second endings, indicated by bracketed lines and the numbers "1." and "2." above them.

Dan Roger's Jig



Musical score for Dan Roger's Jig, written in treble clef, 12/8 time signature, and B-flat major. The piece consists of four staves of music. The first two staves include trills (tr) above the notes. The piece concludes with a double bar line and repeat dots.

Tie the Petticoat Tighter



Musical score for Tie the Petticoat Tighter, written in treble clef, 6/8 time signature, and B-flat major. The piece consists of four staves of music. The first two staves are the main melody. The third and fourth staves show two alternative endings, labeled '1.' and '2.', with brackets indicating the scope of each ending.

Trip It Upstairs

Musical score for 'Trip It Upstairs' in 6/8 time, featuring five staves of music. The key signature has one flat (B-flat). The first staff begins with a treble clef and a 6/8 time signature. The melody consists of eighth and sixteenth notes. The second staff includes repeat signs. The third and fourth staves continue the melodic line with some chromatic movement. The fifth staff concludes the piece with a double bar line and repeat dots.

Moll In The Wad

Musical score for 'Moll In The Wad' in 6/8 time, featuring four staves of music. The key signature has one flat (B-flat). The first staff begins with a treble clef and a 6/8 time signature. The melody is composed of eighth and sixteenth notes. The second staff ends with a double bar line and repeat dots. The third and fourth staves continue the piece, with the fourth staff concluding with a double bar line and repeat dots.

Tim The Thatcher

Musical score for 'Tim The Thatcher' in G minor, 6/8 time. The score consists of five staves of music. The first staff begins with a treble clef, a key signature of one flat (B-flat), and a 6/8 time signature. The melody is written in a single line. The second staff continues the melody. The third staff includes a repeat sign (double bar line with two dots) in the middle. The fourth and fifth staves continue the melody to the end of the piece, which concludes with a double bar line and repeat dots.

Is It The Priest You Want?

Musical score for 'Is It The Priest You Want?' in G minor, 6/8 time. The score consists of four staves of music. The first staff begins with a treble clef, a key signature of one flat (B-flat), and a 6/8 time signature. The melody is written in a single line. The second staff continues the melody. The third and fourth staves continue the melody to the end of the piece, which concludes with a double bar line and repeat dots.

Whisky And Water

Musical score for 'Whisky And Water' in G major (one sharp) and 6/8 time. The score consists of five staves. The first two staves form the first system, and the last three staves form the second system. The first system contains the first two staves. The second system contains the last three staves. The first staff of the second system has a first ending bracket labeled '1.' above it. The second staff of the second system has a second ending bracket labeled '2.' above it. The piece concludes with a double bar line and repeat dots.

The Broken Pledge

Musical score for 'The Broken Pledge' in G major (one sharp) and C major (no sharps or flats) time signatures. The score consists of five staves. The first staff is in C major and contains a triplet of eighth notes marked with a '3'. The second and third staves are in G major and contain triplets of eighth notes marked with a '3'. The fourth and fifth staves are in G major and contain triplets of eighth notes marked with a '3'. The piece concludes with a double bar line and repeat dots.

Repeal of the Union

Musical score for 'Repeal of the Union' in G major (one sharp) and 3/4 time. The score consists of five staves of music. The first four staves contain the main melody, which features several triplet markings (indicated by a '3' above the notes). The fifth staff continues the melody with more triplet markings. The piece concludes with a double bar line.

The Milliner's Daughter

Musical score for 'The Milliner's Daughter' in F major (one flat) and 3/4 time. The score consists of four staves of music. The first staff contains the main melody, which ends with a repeat sign. The second and third staves contain the accompaniment, featuring triplet markings. The fourth staff continues the accompaniment and includes a trill marking (tr) above a note. The piece concludes with a double bar line.

Music in the Glen

Musical score for "Music in the Glen" in G major (one sharp) and 3/4 time. The piece consists of five staves of music. The first staff begins with a treble clef, a key signature of one sharp (F#), and a common time signature (C). The melody is written in a single line. The second staff continues the melody. The third staff features a trill on the third measure. The fourth staff contains a triplet of eighth notes on the second measure, marked with a "3". The fifth staff concludes the piece.

Take Your Choice

Musical score for "Take Your Choice" in B-flat major (two flats) and 3/4 time. The piece consists of five staves of music. The first staff begins with a treble clef, a key signature of two flats (Bb, Eb), and a common time signature (C). The melody is written in a single line. The second staff continues the melody. The third staff features a repeat sign followed by a first ending. The fourth staff continues the melody. The fifth staff concludes the piece. Triplet markings with the number "3" are present above the eighth notes in the first, second, and third staves.

The Avonmore

3 3 3

to §

The Merry Days of Easter

3 3 3

to §

Leave My Way

Musical score for "Leave My Way" in G major, 2/4 time. The score consists of four staves of music. The first staff begins with a treble clef, a key signature of one flat (F major), and a common time signature. The melody features eighth and sixteenth notes, with a trill (tr) in the final measure. The second staff contains a triplet of eighth notes. The third staff begins with a trill (tr) and continues with eighth notes. The fourth staff features a triplet of eighth notes and ends with a double bar line.

The Bunch of Green Rushes

Musical score for "The Bunch of Green Rushes" in G major, 2/4 time. The score consists of five staves of music. The first staff begins with a treble clef, a key signature of one flat (F major), and a common time signature. It includes a section symbol (§) and a triplet of eighth notes. The second staff continues with eighth notes and another triplet. The third staff features a repeat sign and ends with a double bar line. The fourth and fifth staves continue the melody with eighth notes and triplets, ending with a double bar line.

Miss McDonald

The musical score for "Miss McDonald" is written in G major (one sharp) and 2/4 time. It consists of nine staves. The first staff begins with a treble clef, a key signature of one sharp (F#), and a common time signature. The melody starts with a quarter rest, followed by a quarter note G4, a quarter note A4, and a quarter note B4. A repeat sign follows, with a first ending bracket over the next two measures: a quarter note G4, a quarter note A4, and a quarter note B4, all marked with a triplet '3'. The second ending bracket covers the next two measures: a quarter note G4, a quarter note A4, and a quarter note B4, also marked with a triplet '3'. The second staff continues the melody with a quarter note G4, a quarter note A4, and a quarter note B4, all marked with a triplet '3'. It then branches into two first endings: the first ending is a quarter note G4, a quarter note A4, and a quarter note B4, marked with a triplet '3'; the second ending is a quarter note G4, a quarter note A4, and a quarter note B4, also marked with a triplet '3'. The third staff is the rhythmic accompaniment, starting with a treble clef, a key signature of one sharp, and a common time signature. It begins with a rhythmic flourish 'tr' and a quarter note G4, followed by a quarter note A4, a quarter note B4, and a quarter note G4. The fourth staff continues the accompaniment with a quarter note G4, a quarter note A4, a quarter note B4, and a quarter note G4. It then branches into two first endings: the first ending is a quarter note G4, a quarter note A4, and a quarter note B4, marked with a triplet '3'; the second ending is a quarter note G4, a quarter note A4, and a quarter note B4, also marked with a triplet '3'. The fifth staff continues the accompaniment with a quarter note G4, a quarter note A4, a quarter note B4, and a quarter note G4. The sixth staff continues with a quarter note G4, a quarter note A4, a quarter note B4, and a quarter note G4. The seventh staff continues with a quarter note G4, a quarter note A4, a quarter note B4, and a quarter note G4. The eighth staff continues with a quarter note G4, a quarter note A4, a quarter note B4, and a quarter note G4. The ninth staff continues with a quarter note G4, a quarter note A4, a quarter note B4, and a quarter note G4, ending with a double bar line.

The Bloom of Youth

Musical score for 'The Bloom of Youth' in G major (one sharp) and common time (C). The piece consists of five staves of music. The first staff begins with a treble clef, a key signature of one sharp (F#), and a common time signature. The melody is primarily eighth and sixteenth notes. The second staff continues the melody with some beamed eighth notes. The third staff features a repeat sign and a triplet of eighth notes. The fourth staff contains two more triplet markings. The fifth staff concludes the piece with a double bar line.

Cloone Hornpipe

Musical score for 'Cloone Hornpipe' in D minor (two flats) and common time (C). The piece consists of five staves of music. The first staff begins with a treble clef, a key signature of two flats (Bb, Eb), and a common time signature. The melody is primarily eighth and sixteenth notes, with some dotted rhythms. The second staff continues the melody with a fermata over a note. The third staff features two triplet markings. The fourth staff contains a triplet marking. The fifth staff concludes the piece with a double bar line.

The Liverpool Hornpipe

The musical score for 'The Liverpool Hornpipe' is presented in a single melodic line on a treble clef staff. The piece is in 2/4 time and consists of eight measures. The notation includes various rhythmic values such as eighth and sixteenth notes, often beamed together. There are two repeat signs (double bar lines with two dots) located at the end of the third measure and the beginning of the seventh measure. The piece concludes with a double bar line and a repeat sign at the end of the eighth measure.

Bantry Bay

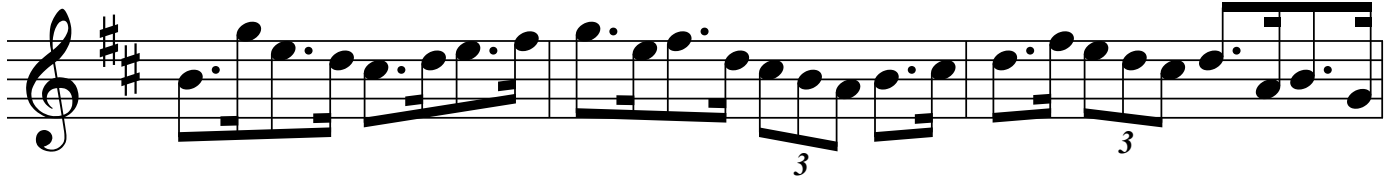
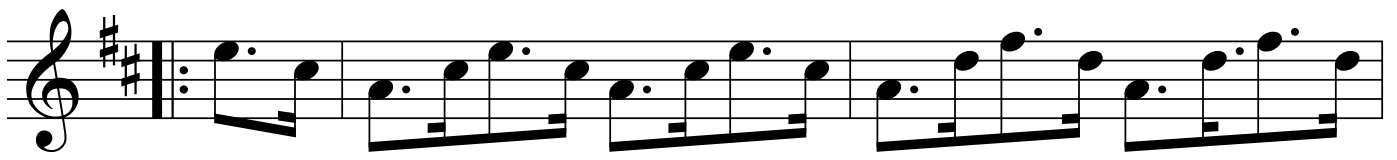
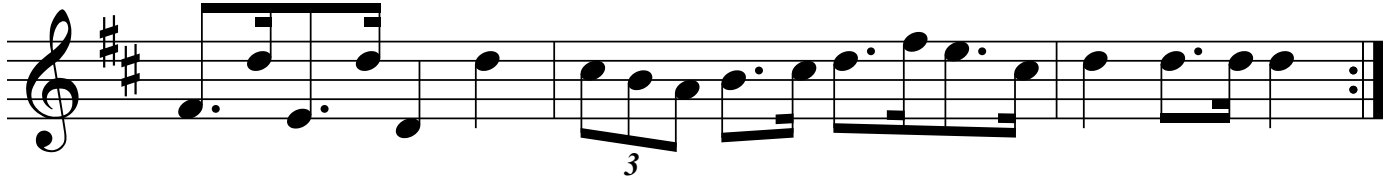
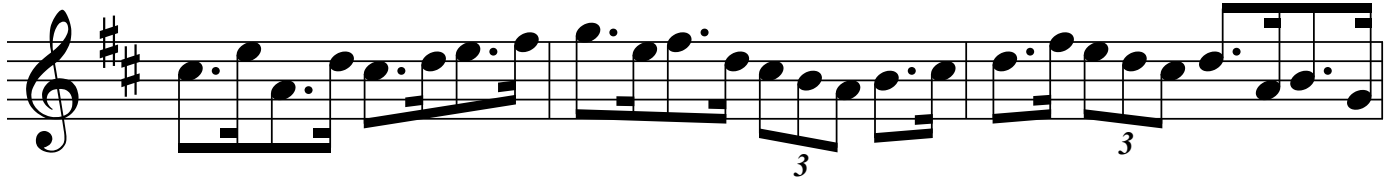
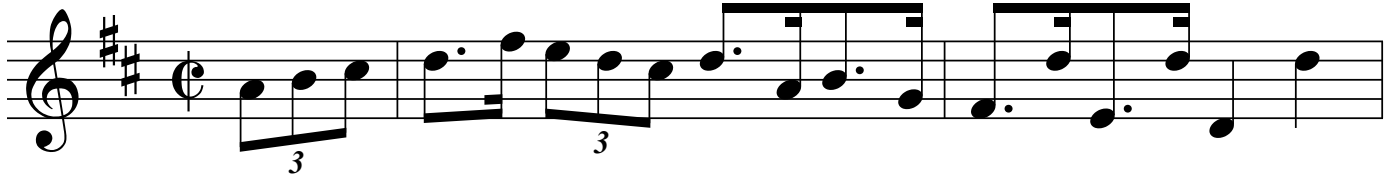


Musical score for Bantry Bay, consisting of five staves of music in G major (one sharp) and 2/4 time. The score includes a repeat sign in the third staff.

The Kilkenny Hornpipe



Musical score for The Kilkenny Hornpipe, consisting of three staves of music in G major (one sharp) and 2/4 time. The score includes a repeat sign in the third staff.



Irish, English and Scottish Dances, vol 2

Ask My Father

Musical score for "Ask My Father" in 6/8 time. The piece consists of four staves of music. The first two staves form the first phrase, and the last two staves form the second phrase. The key signature is one flat (B-flat), and the time signature is 6/8. The music features a mix of eighth and sixteenth notes, with some triplet patterns.

Get Up Early

Musical score for "Get Up Early" in 6/8 time. The piece consists of five staves of music. The first two staves form the first phrase, and the last three staves form the second phrase. The key signature is two flats (B-flat and E-flat), and the time signature is 6/8. The music features a mix of eighth and sixteenth notes, with some triplet patterns. The second phrase includes first and second endings, indicated by bracketed lines and numbers 1 and 2.

Dan Roger's Jig

Musical score for Dan Roger's Jig, written in bass clef, 12/8 time signature, and B-flat major. The score consists of four staves of music. The first staff begins with a treble clef and a 12/8 time signature. The music features a mix of eighth and sixteenth notes, with two trills marked 'tr' in the first measure. The second staff includes repeat signs. The third and fourth staves continue the melodic line with various rhythmic patterns.

Tie the Petticoat Tighter

Musical score for Tie the Petticoat Tighter, written in bass clef, 6/8 time signature, and B-flat major. The score consists of four staves of music. The first staff begins with a treble clef and a 6/8 time signature. The music features a mix of eighth and sixteenth notes. The second staff includes repeat signs. The third and fourth staves include first and second endings, marked '1.' and '2.' respectively, with bracketed lines indicating the sequence of notes.

Trip It Upstairs

Musical score for 'Trip It Upstairs' in 6/8 time, featuring a single melodic line on a staff with a treble clef and a key signature of one flat (B-flat). The piece consists of five staves of music. The first staff begins with a treble clef, a key signature of one flat, and a 6/8 time signature. The melody is composed of eighth and sixteenth notes, with some triplet patterns. The second staff includes a repeat sign and a first ending. The third and fourth staves continue the melodic development with various rhythmic patterns. The fifth staff concludes the piece with a final cadence.

Moll In The Wad

Musical score for 'Moll In The Wad' in 6/8 time, featuring a single melodic line on a staff with a treble clef and a key signature of one flat (B-flat). The piece consists of four staves of music. The first staff begins with a treble clef, a key signature of one flat, and a 6/8 time signature. The melody is composed of eighth and sixteenth notes. The second staff includes a repeat sign and a first ending. The third and fourth staves continue the melodic development with various rhythmic patterns. The fourth staff concludes the piece with a final cadence.

Tim The Thatcher

Musical score for 'Tim The Thatcher' in 6/8 time, featuring a single melodic line on a bass clef staff. The key signature has two flats (B-flat and E-flat). The piece consists of five staves of music. The first staff begins with a treble clef and a 6/8 time signature. The melody is composed of eighth and quarter notes, with some dotted rhythms. The second staff continues the melody, ending with a fermata. The third staff includes a repeat sign. The fourth and fifth staves complete the piece with a final double bar line.

Is It The Priest You Want?

Musical score for 'Is It The Priest You Want?' in 6/8 time, featuring a single melodic line on a bass clef staff. The key signature has two flats (B-flat and E-flat). The piece consists of four staves of music. The first staff begins with a treble clef and a 6/8 time signature. The melody is composed of eighth and quarter notes, with some dotted rhythms. The second staff continues the melody, ending with a fermata. The third and fourth staves complete the piece with a final double bar line.

Whisky And Water

Musical score for 'Whisky And Water' in 6/8 time. The score consists of five staves. The first two staves form the first system. The third staff begins with a first ending bracket labeled '1.' and ends with a repeat sign. The fourth staff begins with a second ending bracket labeled '2.' and ends with a repeat sign. The fifth staff concludes the piece with a final double bar line.

The Broken Pledge

Musical score for 'The Broken Pledge' in 3/4 time with a key signature of one sharp (F#). The score consists of five staves. The first staff features a triplet of eighth notes marked with a '3'. The second staff features a triplet of eighth notes marked with a '3'. The third staff features a triplet of eighth notes marked with a '3'. The fourth staff features a triplet of eighth notes marked with a '3'. The fifth staff concludes the piece with a final double bar line.

Repeal of the Union

Musical score for 'Repeal of the Union' in G major, 3/4 time. The score consists of five staves. The first staff begins with a treble clef, a key signature of one sharp (F#), and a common time signature (C). The music features a series of eighth-note patterns, many of which are grouped as triplets, indicated by a '3' above the notes. The piece concludes with a double bar line.

The Milliner's Daughter

Musical score for 'The Milliner's Daughter' in G minor, 3/4 time. The score consists of four staves. The first staff begins with a treble clef, a key signature of two flats (Bb, Eb), and a common time signature (C). The music features a series of eighth-note patterns, many of which are grouped as triplets, indicated by a '3' below the notes. The piece concludes with a double bar line.

Music in the Glen

Musical score for 'Music in the Glen' in 5/8 time. The score consists of five staves of music. The first staff begins with a treble clef, a common time signature, and a key signature of one flat. The music features a mix of eighth and sixteenth notes, with some triplet markings. The second staff continues the melody. The third staff includes a fermata over a note. The fourth staff has a triplet of eighth notes. The fifth staff continues the piece with various rhythmic patterns.

Take Your Choice

Musical score for 'Take Your Choice' in 5/8 time. The score consists of five staves of music. The first staff begins with a treble clef, a common time signature, and a key signature of two flats. The music features a mix of eighth and sixteenth notes, with several triplet markings. The second staff continues the melody. The third staff includes a repeat sign. The fourth staff continues the piece with various rhythmic patterns. The fifth staff concludes the piece with a final cadence.

Cloone Hornpipe

Musical score for Cloone Hornpipe, featuring five staves of music in 5/8 time. The piece begins with a repeat sign. The first staff contains a treble clef, a common time signature, and a repeat sign. The music consists of eighth and sixteenth notes, with several triplet markings (indicated by a '3' below the notes). The second staff continues the melody with more triplet markings. The third and fourth staves also feature triplet markings. The fifth staff concludes the piece with a repeat sign and the text "to §".

The Merry Days of Easter

Musical score for The Merry Days of Easter, featuring four staves of music in 5/8 time. The piece begins with a treble clef, a key signature of one flat (B-flat), and a common time signature. The music consists of eighth and sixteenth notes, with several triplet markings (indicated by a '3' below the notes). The first staff includes a repeat sign. The second staff features a repeat sign and a double bar line. The third and fourth staves also feature triplet markings. The fourth staff concludes the piece with a repeat sign and the text "to §".

Leave My Way

Musical score for "Leave My Way" in G minor, 2/4 time. The score consists of five staves of music. The first staff begins with a treble clef, a key signature of one flat (B-flat), and a common time signature (C). The melody is written in eighth and sixteenth notes. A trill (tr) is indicated above the final note of the first staff. The second staff contains a triplet of eighth notes marked with a '3' below. The third staff begins with a trill (tr) above the first note. The fourth staff contains another triplet of eighth notes marked with a '3' below. The fifth staff concludes the piece with a final triplet of eighth notes marked with a '3' below.

The Bunch of Green Rushes

Musical score for "The Bunch of Green Rushes" in G minor, 2/4 time. The score consists of five staves of music. The first staff begins with a treble clef, a key signature of one flat (B-flat), and a common time signature (C). The melody is written in eighth and sixteenth notes. A triplet of eighth notes is marked with a '3' above. The second staff contains a section marked with a double bar line and a repeat sign (⌘), followed by a triplet of eighth notes marked with a '3' above. The third staff concludes the piece with a double bar line and a repeat sign (⌘). The fourth and fifth staves continue the melody with eighth and sixteenth notes.

to ⌘

Miss McDonald

The musical score for "Miss McDonald" is written in bass clef with a common time signature. It consists of ten staves of music. The first staff begins with a treble clef and a common time signature, followed by a repeat sign. The second staff contains two first and second endings, each marked with a '3' for a triplet. The third staff includes a trill symbol (*tr*) and a triplet. The fourth staff also features two first and second endings, each marked with a '3'. The fifth staff contains a triplet. The sixth staff includes a triplet and a trill symbol (*tr*). The seventh staff contains a triplet. The eighth staff includes a triplet and a fermata. The ninth staff contains a triplet. The tenth staff concludes with a triplet. The score is primarily composed of eighth and sixteenth notes, with various rests and articulation marks.

The Bloom of Youth

Musical score for 'The Bloom of Youth' in C major, 2/4 time. The score consists of five staves of music. The first staff begins with a treble clef and a common time signature. The music features a mix of eighth and sixteenth notes, with some slurs and accents. The second and third staves continue the melody. The fourth and fifth staves feature triplet markings (the number '3') under groups of notes.

Cloone Hornpipe

Musical score for 'Cloone Hornpipe' in B-flat major, 2/4 time. The score consists of five staves of music. The first staff begins with a treble clef and a key signature of one flat. The music features a mix of eighth and sixteenth notes, with many slurs and accents. The second and third staves continue the melody. The fourth and fifth staves feature triplet markings (the number '3') under groups of notes. There are also fermatas and repeat signs in the score.

The Liverpool Hornpipe

The musical score for "The Liverpool Hornpipe" is presented on a single staff with a bass clef and a 2/4 time signature. The piece is written in a key with one flat (B-flat major or D minor). The melody consists of a series of eighth and sixteenth notes, with some slurs and ties. The score includes a repeat sign with first and second endings. The first ending leads back to the beginning of the piece, while the second ending concludes the piece with a final cadence.

Bantry Bay

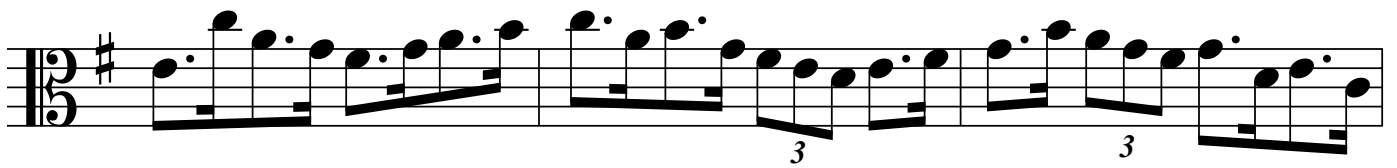
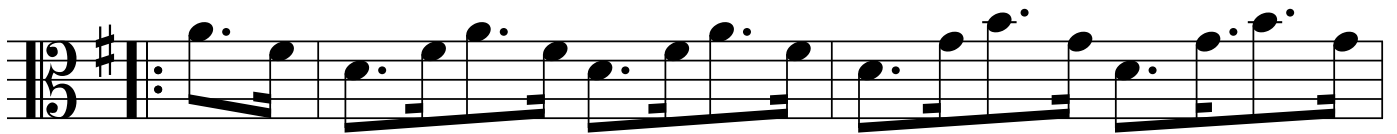
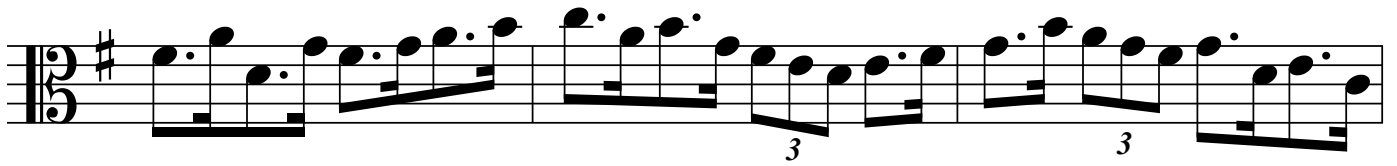
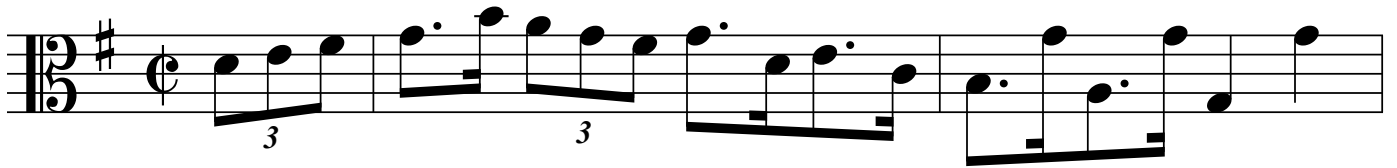
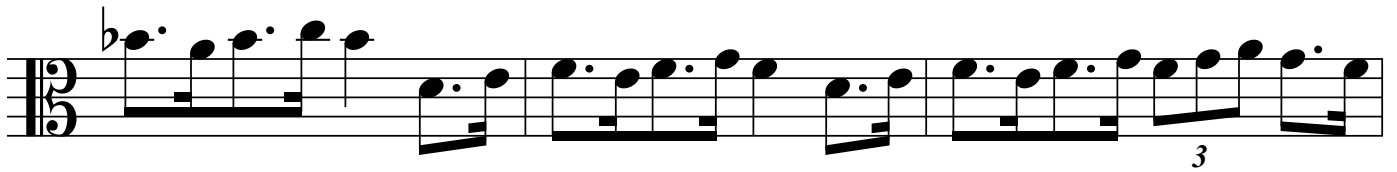


Musical score for Bantry Bay, consisting of six staves of music in bass clef and common time. The piece features a mix of eighth and sixteenth notes, with some measures containing beamed sixteenth notes. The score includes repeat signs and a double bar line with repeat dots.

The Kilkenny Hornpipe



Musical score for The Kilkenny Hornpipe, consisting of three staves of music in bass clef and common time. The piece features a mix of eighth and sixteenth notes, with some measures containing beamed sixteenth notes. The score includes repeat signs and a double bar line with repeat dots.



Irish, English and Scottish Dances, vol 2

Ask My Father

Musical score for "Ask My Father" in bass clef, 6/8 time, key of D major. The score consists of four staves. The first staff begins with a treble clef and a key signature of one sharp (F#), which is then changed to a bass clef. The melody is written in 6/8 time. The second staff continues the melody. The third staff begins with a repeat sign and a fermata over the first measure. The fourth staff concludes the piece with a repeat sign and a fermata over the final measure.

Get Up Early

Musical score for "Get Up Early" in bass clef, 6/8 time, key of Bb major. The score consists of five staves. The first staff begins with a treble clef and a key signature of two flats (Bb), which is then changed to a bass clef. The melody is written in 6/8 time. The second staff continues the melody. The third staff begins with a repeat sign and a fermata over the first measure. The fourth and fifth staves contain a complex rhythmic pattern with many beamed notes, characteristic of a fiddle accompaniment. The piece concludes with a repeat sign and a fermata over the final measure.

Dan Roger's Jig

Musical score for Dan Roger's Jig, written in bass clef with a 12/8 time signature. The piece consists of four staves of music. The first staff begins with a treble clef and a 12/8 time signature. The music features a mix of eighth and sixteenth notes, with some notes marked with a trill (tr). The second staff includes repeat signs. The third and fourth staves continue the melodic line with various rhythmic patterns.

Tie the Petticoat Tighter

Musical score for Tie the Petticoat Tighter, written in bass clef with a 6/8 time signature. The piece consists of four staves of music. The first staff begins with a treble clef and a 6/8 time signature. The music features a mix of eighth and sixteenth notes. The second staff includes repeat signs. The third and fourth staves contain first and second endings, indicated by '1.' and '2.' above the notes.

Trip It Upstairs

Musical score for 'Trip It Upstairs' in bass clef, 6/8 time, and one flat. The score consists of five staves. The first staff begins with a treble clef and a 6/8 time signature. The music features a mix of eighth and sixteenth notes, with some triplet patterns. The second staff includes a repeat sign with first and second endings. The third and fourth staves continue the melodic line with various rhythmic patterns. The fifth staff concludes the piece with a final cadence.

Moll In The Wad

Musical score for 'Moll In The Wad' in bass clef, 6/8 time, and one flat. The score consists of four staves. The first staff begins with a treble clef and a 6/8 time signature. The music is characterized by a steady eighth-note rhythm. The second staff ends with a repeat sign. The third and fourth staves continue the piece with similar rhythmic patterns and conclude with a final cadence.

Tim The Thatcher

Musical score for 'Tim The Thatcher' in bass clef, 6/8 time, and B-flat major. The score consists of five staves of music. The first staff begins with a treble clef and a 6/8 time signature. The melody is primarily eighth and sixteenth notes. The second staff continues the melody with a repeat sign at the end. The third staff features a more active bass line with eighth notes and a repeat sign. The fourth and fifth staves continue the piece, ending with a final double bar line.

Is It The Priest You Want?

Musical score for 'Is It The Priest You Want?' in bass clef, 6/8 time, and B-flat major. The score consists of four staves of music. The first staff begins with a treble clef and a 6/8 time signature. The melody is primarily eighth and sixteenth notes. The second staff continues the melody with a repeat sign at the end. The third and fourth staves feature a more active bass line with eighth notes and a repeat sign at the end.

Whisky And Water

Musical score for "Whisky And Water" in bass clef, 6/8 time, key of D major. The score consists of five staves. The first two staves form the first line, and the next three staves form the second line. The first line contains the first two measures of the piece. The second line contains the next three measures, including a first ending bracket over the third measure and a second ending bracket over the fourth and fifth measures. The piece concludes with a double bar line at the end of the fifth staff.

The Broken Pledge

Musical score for "The Broken Pledge" in bass clef, common time, key of D major. The score consists of five staves. The first two staves form the first line, and the next three staves form the second line. The first line contains the first two measures of the piece, with a triplet of eighth notes in the second measure. The second line contains the next three measures, each starting with a triplet of eighth notes. The piece concludes with a double bar line at the end of the fifth staff.

Repeal of the Union

Musical score for 'Repeal of the Union' in bass clef, key of D major (two sharps), and common time. The score consists of five staves. The first staff begins with a treble clef and a common time signature. The music features a series of eighth-note patterns, many of which are grouped as triplets (indicated by a '3' below the notes). The piece concludes with a double bar line.

The Milliner's Daughter

Musical score for 'The Milliner's Daughter' in bass clef, key of B minor (two flats), and common time. The score consists of four staves. The first staff begins with a treble clef and a common time signature. The music features a series of eighth-note patterns, many of which are grouped as triplets (indicated by a '3' below the notes). The piece concludes with a double bar line.

Music in the Glen

Musical score for 'Music in the Glen' in G major, 2/4 time. The score consists of six staves of music. The first staff begins with a treble clef, a key signature of one sharp (F#), and a common time signature (C). The music is written in a single voice with a bass clef. The piece features a series of eighth and sixteenth notes, with some triplets indicated by a '3' below the notes. The melody is simple and melodic, typical of a folk tune.

Take Your Choice

Musical score for 'Take Your Choice' in B minor, 2/4 time. The score consists of six staves of music. The first staff begins with a treble clef, a key signature of two flats (Bb), and a common time signature (C). The music is written in a single voice with a bass clef. The piece features a series of eighth and sixteenth notes, with some triplets indicated by a '3' below the notes. The melody is simple and melodic, typical of a folk tune.

Cloone Hornpipe

Musical score for Cloone Hornpipe in bass clef, key of D major, 2/4 time. The piece consists of five staves of music. It begins with a repeat sign and a key signature change to D major. The melody features several triplet patterns, indicated by the number '3' below the notes. The piece concludes with a repeat sign and the instruction 'to %'.

The Merry Days of Easter

Musical score for The Merry Days of Easter in bass clef, key of B-flat major, 2/4 time. The piece consists of four staves of music. It begins with a repeat sign and a key signature change to B-flat major. The melody features several triplet patterns, indicated by the number '3' below the notes. The piece concludes with a repeat sign and the instruction 'to %'.

Leave My Way

Musical score for 'Leave My Way' in bass clef, common time, and one flat. The score consists of four staves. The first staff begins with a treble clef and a common time signature. The music features a series of eighth and sixteenth notes, with a trill (tr) in the final measure. The second staff includes a trill (tr) and a triplet (3). The third staff starts with a repeat sign. The fourth staff features a triplet (3) and ends with a double bar line.

The Bunch of Green Rushes

Musical score for 'The Bunch of Green Rushes' in bass clef, common time, and one flat. The score consists of five staves. The first staff begins with a treble clef and a common time signature. The music features a series of eighth and sixteenth notes, with a triplet (3) and a repeat sign. The second staff includes a repeat sign and a triplet (3). The third staff features a triplet (3) and a repeat sign. The fourth staff includes a repeat sign. The fifth staff features a triplet (3) and ends with a double bar line.

to %

The Bloom of Youth

Musical score for 'The Bloom of Youth' in bass clef, G major, common time. It consists of five staves of music. The first staff begins with a treble clef and a key signature of one sharp (F#). The piece features a continuous eighth-note melody with various phrasings, including slurs and accents. The fourth and fifth staves contain triplet markings (the number '3') above groups of three notes.

Cloone Hornpipe

Musical score for 'Cloone Hornpipe' in bass clef, D minor, common time. It consists of five staves of music. The first staff begins with a treble clef and a key signature of two flats (Bb, Eb). The piece features a continuous eighth-note melody with various phrasings, including slurs, accents, and fermatas. The third, fourth, and fifth staves contain triplet markings (the number '3') above groups of three notes.

The Liverpool Hornpipe

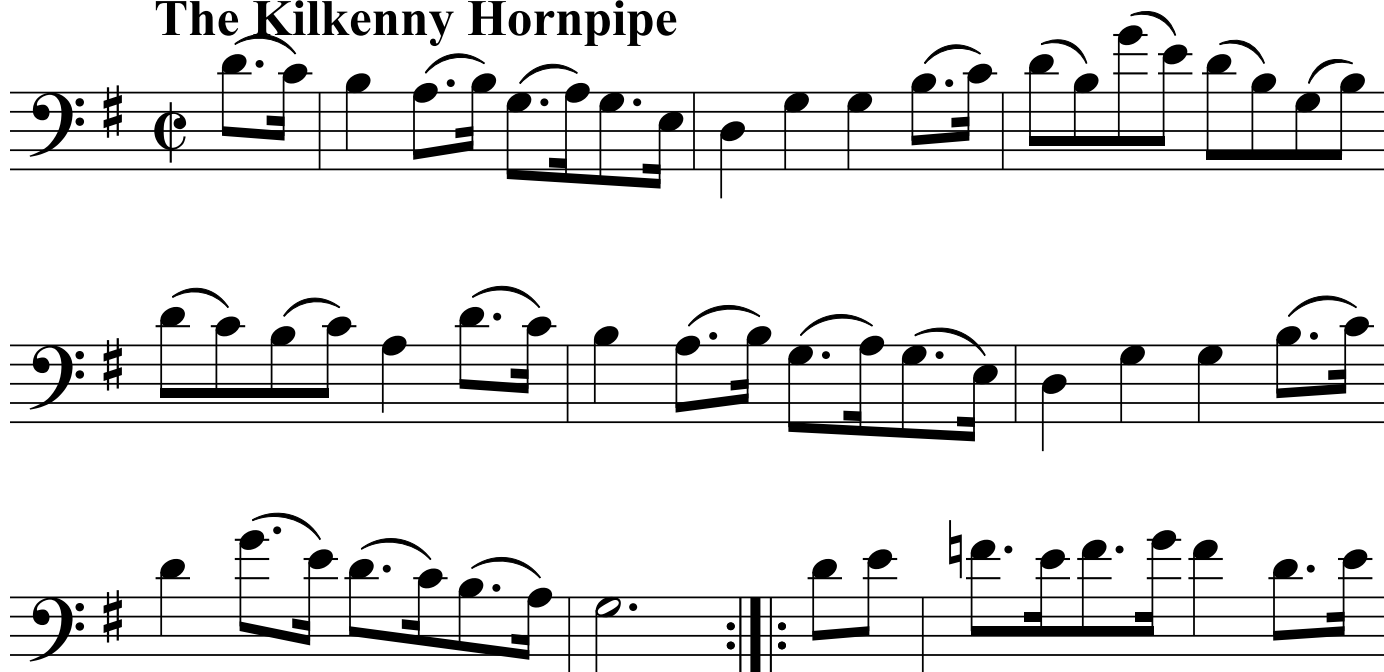
The musical score for 'The Liverpool Hornpipe' is presented in a single melodic line on a bass clef staff. The piece is in 2/4 time and consists of 16 measures. The notation includes various rhythmic values such as eighth and sixteenth notes, often beamed together. There are several repeat signs (double bar lines with dots) indicating first and second endings. The melody starts with a half note G2, followed by a quarter note A2, and continues with a series of eighth and sixteenth notes, including some triplets. The piece concludes with a final double bar line.

Bantry Bay



Musical score for Bantry Bay, featuring six staves of music in bass clef with a key signature of one sharp (F#) and a common time signature (C). The piece consists of six staves of music. The first staff begins with a treble clef and a key signature of one sharp, followed by a common time signature. The music is written in bass clef. The score includes various note values, rests, and phrasing slurs. A repeat sign is present at the end of the fourth staff, and a double bar line with repeat dots is at the end of the sixth staff.

The Kilkenny Hornpipe



Musical score for The Kilkenny Hornpipe, featuring three staves of music in bass clef with a key signature of one sharp (F#) and a common time signature (C). The piece consists of three staves of music. The first staff begins with a treble clef and a key signature of one sharp, followed by a common time signature. The music is written in bass clef. The score includes various note values, rests, and phrasing slurs. A repeat sign is present at the end of the third staff, and a double bar line with repeat dots is at the end of the third staff.

